



# HAPSITE<sup>®</sup> Smart

## Chemical Identification System

### FAST, EASY, ON-SCENE IDENTIFICATION OF UNKNOWNNS

Now get fast, on-scene detection, identification and quantitation of toxic industrial chemicals (TICs) and chemical warfare agents (CWAs) with HAPSITE Smart, the only person-portable, gas chromatograph/mass spectrometer (GC/MS) that gives you lab-quality data with the push of a single button. GC/MS is the benchmark for positive identification of organic chemicals with the highest degree of accuracy of any available analytical technique. And with easy-to-operate HAPSITE Smart Chemical Identification System, users get the confirmatory results within minutes that are necessary to make critical decisions affecting life, health, safety and the mission.

#### FEATURES AT A GLANCE

- Fast, confirmatory results in the field directly comparable to laboratory GC/MS data
- Pre-programmed methods to obtain quality data in minutes with a few simple keystrokes
- Bright graphical display of chromatograms, spectra, instrument condition, and cal curves on the instrument for easy viewing
- Weather-resistant and easily decontaminated
- Built-in GPS records exact sampling location with date/time stamp for legally defensible data

#### SIMPLICITY, SPEED AND PRECISION

HAPSITE Smart is the most powerful, truly portable analytical tool available for field use. Its totally self-contained system with pre-programmed methods and 32-bit architecture for more versatile data processing means an operator can simply power up the instrument to enable the appropriate method, establish specified temperatures, and automatically tune the instrument if necessary. HAPSITE Smart signals when ready, in minutes, and with the push

#### APPLICATIONS

- Emergency Response
- Chemical Monitoring
- Environmental Assessment

of a single button, begins sample acquisition. Complete analysis results, including chromatograms, spectra, library search results and quantitative data, are displayed on a bright, clearly visible screen in daylight or darkness.

For the most demanding field analysis by the experienced GC/MS professional, HAPSITE Smart allows customized method building, remote operation and sophisticated data-presentation using the rugged, wireless Panasonic<sup>®</sup> Toughbook<sup>®</sup> laptop computer, which now is available with the instrument.

#### LOW DETECTION LIMITS TO PARTS PER TRILLION

In HAPSITE Smart, a microtrap concentrator enables detection and identification of volatile organic compounds (VOCs) in the low parts per billion/parts per trillion range, providing unprecedented sensitivity for on-scene analysis. This can be helpful in investigating problems caused by extremely low-level contamination, such as odor complaints, sick building syndrome, or chemical warfare agents.

#### SMART UPGRADES

INFICON offers an economical upgrade to HAPSITE Smart for standard HAPSITE Chemical Identification Systems.

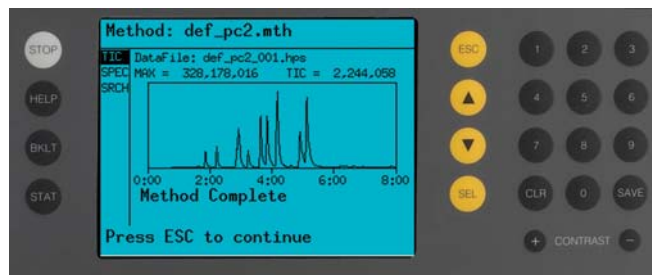
## OPTIONAL ACCESSORIES

**HAPSITE HeadSpace Sampling System** – For highly accurate, on-scene analysis of VOCs in water, soil and solids

**HAPSITE SituProbe** – For lab-quality water analysis (purge and trap) on-site

**HAPSIM** – Hand probe designed for training with reduced use of carrier gas/NEG pumps

**HAPSITE Thermal Desorber** – Standalone tube desorption system for collecting and analyzing air samples



Chromatogram displayed on the HAPSITE Smart.

## SPECIFICATIONS

Operating Conditions	5°C to 45°C. Cold weather insulating bag and insulation available
L x W x H	18" x 17" x 7" (46 cm x 43 cm x 18 cm)
Weight	Approximately 16 kg (35 lbs) with battery
Power Supply	Rechargeable NiMH battery pack or AC inverter
Battery Life	Battery lasts approximately 3 hours before recharging is needed
Internal Power Consumption	24 V(dc), 30 watts at normal operating conditions
Sample Introduction	Direct...internal sample pump
Carrier Gas	Nitrogen (can be customized for Helium)
Data System	Integral Intel® Pentium® processor & external Windows®-based laptop (not required for operation)
Library	National Institute of Standards and Technology (NIST) and AMDIS Mass Spectral libraries; NIOSH.
SmartTune	Diagnostic software routine for self-tuning, if necessary, and preparing for sample analysis.
Detection Limits	<ppb for most analytes
<b>Mass Spectrometer</b>	
Mass Range	1-300 AMU
Scan Rate	1000 AMU/sec @ 10 points per AMU
Ionization Mode	70 eV EI
Detector	Electron multiplier
Vacuum System	Non-evaporable getter pump (NEG)
Dynamic Range	7 decades
<b>Gas Chromatograph</b>	
Temperature Programmable GC Column	45°C to 225°C
GC Column	30 m x .32 mm i.d. Alternate phase and film thickness options available.



### GLOBAL HEADQUARTERS:

Two Technology Place, East Syracuse, NY 13057 USA  
Tel: +1.315.434.1100 Fax: +1.315.437.3803 E-mail: reachus@inficon.com

Visit our website for other sales offices worldwide. [www.inficon.com](http://www.inficon.com)  
HAPSITE is a registered trademark of INFICON. All other trademarks are the property of their respective owners.  
Due to our continuing program of product improvements, specifications are subject to change without notice.

dibc14a1 ©2004 INFICON